



## **Chapter 2**

### **The LITPC Board of Directors**

The LITPC Board of Directors presently consists of a President, First Vice President, Second Vice President, Immediate Past President, Secretary, and Treasurer. Also, there are six Directors, three of which are serving two-year terms and three serving one-year terms. In addition, there are four members appointed by the President and confirmed by the Board, each of whom have full voting privileges. The four positions are the Legal Counsel, Newsletter Editor, Policy Chairman, and Web Master. In recognition of their long and dedicated service to the organization, all Past Presidents are extended the courtesy of voting privileges when they are present for a particular meeting. However, the Past Presidents are not counted when a determination is made for quorum purposes.

The LITPC membership elects the Second Vice President and the Director positions for terms of two years each. The incumbent Vice Presidents automatically advance to the next higher position, without challenge in the election process. The Director positions were not added until 1976, which is three years after the organization was formed. As you will read elsewhere in this history, our records are incomplete and we regrettably cannot document all of the individuals who served in the early years of our organization.



**Lions International Trading Pin Club (LITPC)**  
2018 - 2019



**President**  
PCC Mike Gutyan, Indiana

**Immediate Past President**  
PID Bob Libin, New York

**First Vice President**  
PCC Kent Clovis, Oklahoma

**Second Vice President**  
PID Steve Sherer, Ohio

**Secretary**  
Lana McCaulley, Pennsylvania

**Treasurer**  
PDG Richard Durham, North Carolina

**One Year Directors**

Jerry Craiglow, North Carolina  
PCC George Lonneman, Kentucky  
PDG Jeff Hilke, Missouri

**Two Year Directors**

Meg Ager, New Hampshire  
Walter Keach, Connecticut  
PCC Chester Kramer

**Past Presidents (Active & Living)**

PCC Paul Viano, 2013-15, MA  
PDG James "Jim" Minnich, 2011-13, DE  
William "Bill" Sour, 2009-11, CO  
As PDG Larry L. Shaul, 2007-09, PA  
a PCC James "Jim" Schiebel, 2005-07, NY  
David "Dave" Harris, 1999-01, VA  
PDG Robert "Bob" Walker, 1995-97, SC  
PCC William A. "Bill" Smith, 1985-87, VA

**Board Appointees**

Legal Counsel, PID Bob Libin, New York  
Newsletter Editor, PDG Richard Evans, Virginia  
Policy Chairman, PCC James "Jim" Schiebel, New York  
Web Master, PCC Phil Schrack, Virginia

All Past Presidents are afforded the opportunity to vote when they attend a Board Meeting. However, they *are not* counted in determining a quorum.

Board Appointees are full voting members and *are* counted in determining a quorum.

minimum, the LITPC Board of Directors meet at the site of the Annual LITPC Meeting, whether that be an LCI Convention or an Alternate Site Meeting. In addition, and at the discretion of the President, other meetings are called and held at a site selected by the President, with the consent and advice of the members of the board.

The LITPC Board of Directors Meetings are usually open-door type meetings, except for those determined to be "Executive Meetings". Any member of the LITPC may attend a Board Meeting, except Executive Meetings, provided advance notice is given to the President. This is to permit the President to arrange for adequate seating. It is the policy of the LITPC Board of Directors that non-voting LITPC members attending such meetings are understood to be there as observers only and are not permitted to participate in the deliberation, unless invited to do so by the presiding officer.

# LITPC Board of Directors

At the risk of sounding like a broken record, we want to once again emphasize how handicapped we have been in developing this historical summary without the benefit of past “official” records. Merely as a comment, we would hope that we can learn from this and do everything possible to encourage those who are responsible for record keeping to do what is necessary to assure that we have documentation for the future. In the age of computers, there is really no reason or justification for our not having full documentation of a rather dynamic organization such as the LITPC. Here is the makeup of the Board over the years, as we can verify them.

## 1973-1974

President M. W. “Dutch” Blair, PDG Pennsylvania  
Vice President, James “Jim” Shea, PID, Washington  
Secretary-Treasurer Dominick Pallone, Pennsylvania

## 1974-1975

President M. W. “Dutch” Blair, PDG, Pennsylvania  
Vice President, James “Jim” Shea, PID, Washington  
Secretary Dominick Pallone, Pennsylvania  
Treasurer Jim Hartman, Pennsylvania

## 1975-1976

President James “Jim” Shea, PID, Washington  
Immediate Past President M. W. “Dutch” Blair, PDG, Pennsylvania  
Vice President Ken Rhinevault, Illinois  
Secretary-Treasurer, E. L. “Ed” Fogelman, PDG, Washington  
Editor Jack Zepp, Ontario, Canada

## 1976-1977 \*

President James “Jim” Shea, PID, Washington  
Immediate Past President M. W. “Dutch” Blair, PDG, Pennsylvania  
Vice President Ken Rhinevault, Illinois  
Secretary-Treasurer, E.L. “Ed” Fogelman, PDG, Washington  
One-Year Directors:  
Dr. O. J. Ratcliff, PDG, Arkansas  
Len Grady, Illinois  
Gil Johnson, Ontario, Canada  
Two-Year Directors:  
Tom Haralson, Tennessee  
John Keister, California  
Jim Selvig, Pennsylvania  
Editor Jack Zepp, Ontario, Canada

## 1977-1978

President Ken Rhinevault, Illinois  
Immediate Past President James “Jim” Shea, Washington  
Vice President Dr. O. J. Ratcliff, Arkansas  
Secretary-Treasurer E.L. “Ed” Fogelman, Washington  
One-Year Directors:  
Tom Haralson, Tennessee  
John Keister, California  
Jim Selvig, Pennsylvania  
Two-Year Directors:  
Jack Bishop, Ontario, Canada  
George Weaver, Florida  
Jack Zepp, Ontario, Canada  
Editor and Membership Chairman  
Ken Rhinevault, Illinois

## 1978-1979

President Ken Rhinevault, Illinois  
Immediate Past President James “Jim” Shea, PID, Washington  
Vice President Dr. O. J. Ratcliff, PDG, Arkansas  
Secretary-Treasurer E.L. “Ed” Fogelman, PDG, Washington  
One-Year Directors:  
Jack Bishop, Ontario, Canada  
George Weaver, Florida  
Jack Zepp, Ontario, Canada  
Two-Year Directors:  
There are no records to reflect these positions.  
Editor and Membership Chairman  
Ken Rhinevault, Illinois

\*This is the first year we elected Directors

## 1979-1980

President Dr. O. J. Ratcliff, Arkansas  
Immediate Past President Ken Rhinevault, Illinois  
Vice President Dr. Jack Bishop, Kitchener, Ontario, Canada  
Secretary-Treasurer E. L. “Ed” Fogelman, Washington  
Two-Year Directors:  
Abe Albert, New Jersey  
W. W. “Bill” Cooper, Missouri  
Unfortunately, for the reason already cited, we have no other records to confirm the other Directors’ names.  
Editor and Membership Chairman  
Ken Rhinevault, Illinois

## 1980-1981

There are no records to confirm the members of the Board; however, we can assume that the three Officers continued in their positions and the known two year Directors continued in their positions.

## 1981-1982

President Jack Bishop, PDG, Kitchener, Ontario, Canada  
First-Vice President John Keister, Ontario, Canada  
Second Vice President George Weaver, Florida  
Secretary-Treasurer E. L. “Ed” Fogelman, PDG, Washington  
Two-Year Directors:  
Philip Cohen, New York  
Charles Holbrook, Tennessee  
William A. “Bill” Smith, PCC, Virginia  
One-Year Directors:  
There are no records to reflect these positions  
Editor and Membership Chairman  
Ken Rhinevault, Illinois

## 1982-1983

President Jack Bishop, PDG, Kitchener, Ontario, Canada  
Immediate Past President Dr. O. J. Ratcliff, PDG, Arkansas  
First Vice President George Weaver, Florida  
Second Vice President, Charles Holbrook, Tennessee  
Secretary-Treasurer E. L. “Ed” Fogelman, PDG, Washington  
Two-Year Directors:  
Ken Fike, Alabama  
Kendal McBride, PDG, Wyoming  
Bill Ritter, Minnesota  
One-Year Directors:  
Philip Cohen, New York  
Grayson East, Michigan  
William A. “Bill” Smith, PCC, Virginia  
Editor and Membership Chairman  
Ken Rhinevault, Illinois

## 1983-1984

President George Weaver, Florida  
Immediate Past Pres Dr. Jack Bishop, PDG, Kitchener, Ontario, Canada  
First Vice President William A. “Bill” Smith, PCC, Virginia  
Second Vice President Charles Holbrook, Tennessee  
Secretary Darwin Willis, PDG, Texas  
Treasurer E. L. “Ed” Fogelman, PDG, Washington  
Two-Year Directors:  
Grant Cookson, Ontario, Canada  
Walter Krupa, Ohio  
Jack Scott, PDG, Ohio  
One-Year Directors:  
Ken Fike, Alabama  
Kendal McBride, PDG, Wyoming  
Bill Ritter, Minnesota  
Editor and Membership Chairman  
Ken Rhinevault, Illinois

# LITPC Board of Directors

## 1984-1985

President George R. Weaver, Florida  
Immediate Past President Dr. Jack Bishop, PDG, Canada  
First Vice President William A. Smith, PCC, Virginia  
Second Vice President Charles Holbrook, Tennessee  
Secretary Darwin Willis, PDG, Texas  
Treasurer E. L. "Ed" Fogelman, PDG, Washington  
Two-Year Directors:  
Richard Lindelof, PDG, Massachusetts  
William Shaw, Michigan  
Al Stack, California  
One-Year Directors:  
Grant L. Cookson, Canada  
Walter V. Krupa, Pennsylvania  
Jack Scott, PDG, Ohio  
Editor and Membership Chairman  
Ken Rhinevault, Illinois

## 1985-1986

President William A. "Bill" Smith, PCC, Virginia  
Immediate Past President George R. Weaver, Florida  
First Vice President Darwin Willis, PDG, Texas  
Second Vice President Jack Scott, PDG, Ohio  
Secretary E.L. "Ed" Fogelman, PDG, Washington  
Treasurer Kendal McBride, PDG, Wyoming  
Two-Year Directors:  
Gerald D. Ehst, Pennsylvania  
Peter Giffin, Canada  
Jerry Townsend, PDG, Mississippi  
One-Year Directors:  
Richard Lindelof, PDG, Massachusetts  
William Shaw, Michigan  
Al Stack, California  
Editor and Membership Chairman  
William N. Vaughan, Georgia

## 1986-1987

President William A. "Bill" Smith, Virginia  
Immediate Past President George R. Weaver, Florida  
First Vice President Darwin Willis, PDG, Texas  
Second Vice President Jack Scott, PDG, Ohio  
Secretary E. L. "Ed" Fogelman, PDG, Washington  
Treasurer Kendal McBride, PDG, Wyoming  
Two-Year Directors:  
Nelson "Mike" Lambert, New Hampshire  
Michael "Mike" Turcone, PDG, Rhode Island  
Wilson R. Welsh, Utah  
One-Year Directors:  
Gerald D. Ehst, Pennsylvania  
Peter L. Giffin, Canada  
Jerry Townsend, PDG, Mississippi  
Editor and Membership Chairman  
William N. "Bill" Vaughan, Florida

## 1987-1988

President Darwin Willis, Texas  
Immediate Past President William A. "Bill" Smith, PCC, Virginia  
First Vice President Jack Scott, PDG, Ohio  
Second Vice President Al Stack, California  
Secretary William "Bill" Shaw, Michigan  
Treasurer E. L. Fogelman, PDG, Washington  
Two-Year Directors:  
Judge Clifton Allen, California  
Lee Myers, Illinois  
Robert E. Walker, PDG, South Carolina  
One-Year Directors:  
Nelson "Mike" Lambert, New Hampshire  
Michael "Mike" Turcone, PDG, Rhode Island  
Wilson R. Welsh, Utah  
Editor and Membership Chairman  
William N. "Bill" Vaughan, Florida

\*\* Not elected - appointed by the Board

## 1988-1989

President Darwin Willis, PDG, Texas  
Immediate Past President William A. Smith, PCC, Virginia  
First Vice President Jack Scott, PDG, Ohio  
Second Vice President Al Stack, California  
Secretary William "Bill" Shaw, Michigan  
Treasurer E. L. "Ed" Fogelman, PCC, Washington  
Two-Year Directors:  
Robert C. "Bob" Meyer, Tennessee  
William R. Pieper, Minnesota  
William Turl, Canada  
One-Year Directors:  
Judge Clifton, Allen, California  
Lee Myer, Illinois  
Robert E. "Bob" Walker, PDG, South Carolina  
Editor William A. "Bill" Smith, PCC, Virginia  
Membership Chair Dorothy Fogelman, Washington

## 1989-1990

President Al Stack, California  
Immediate Past President Darwin Willis, PDG, Texas  
First Vice President Richard "Dick" Lindelof, PDG, Massachusetts  
Second Vice President W. R. "Bill" Cooper, Florida \*\*  
Secretary Bill Shaw, Michigan  
Treasurer E. L. "Ed" Fogelman, PDG, Washington  
Two-Year Directors:  
David E. "Dave" Harris, Virginia  
Larry L. Shaull, PDG, Pennsylvania  
Klaus Wenzke, British Virgin Isles  
One-Year Directors:  
Robert C. Meyer, Tennessee  
William R. Pieper, Minnesota  
William Turl, Canada  
Editor William A. "Bill" Smith, PCC, Virginia  
Membership Chair Dorothy Fogelman, Washington  
Policy Chairman William A. "Bill" Smith, PCC, Virginia

## 1990-1991

President Al Stack, California  
Immediate Past President Darwin Willis, PDG, Texas  
First Vice President Richard "Dick" Lindelof, PDG, Massachusetts  
Second Vice President W. R. "Bill" Cooper, Florida  
Secretary Bill Shaw, Michigan  
Treasurer E. L. "Ed" Fogelman, PDG, Washington  
Two-Year Directors:  
Jim Leal, Canada  
Donald Montlack, PDG, New York  
William "Bill" Sour, Colorado  
One-Year Directors:  
David E. "Dave" Harris, Virginia  
Larry L. Shaull, PDG, Pennsylvania  
Klaus Wenzke, British Virgin Isles  
Editor Mike Barskey, California  
Membership Chairman Bob Meyer, Tennessee  
Policy Chairman William A. "Bill" Smith, PCC, Virginia

## 1991-1992

President Richard "Dick" Lindelof, PDG, Massachusetts  
Immediate Past President Al Stack, California  
First Vice President W. R. "Bill" Cooper, Florida  
Second Vice President Robert E. "Bob" Walker, PDG, South Carolina  
Secretary Bill Shaw, Michigan  
Treasurer E. L. "Ed" Fogelman, PDG, Washington  
Two-Year Directors:  
Bill Prucha, Illinois  
Bruce Strome, PDG, Ohio  
Dr. Joseph Trezza, California  
One-Year Directors:  
Jim Leal, Canada  
Donald Montlack, PDG, New York  
William "Bill" Sour, Colorado  
Editor William A. "Bill" Smith, PCC, Virginia  
Membership Chairman Robert C. "Bob" Meyer, Tennessee  
Policy Chairman William A. "Bill" Smith, PCC, Virginia

2-3

# LITPC Board of Directors

## 1992-1993

President Richard Lindelof, PDG, Massachusetts  
Immediate Past President Al Stack, California  
First Vice President William Cooper, Florida  
Second Vice President Robert E. Walker, PDG, South Carolina  
Third Vice President Robert C. Meyer, Tennessee  
Secretary William Shaw, Michigan  
Treasurer E.L. Fogelman, PDG, Washington  
Two-Year Directors:  
H. J. Orme, Utah  
William Phifer, New Mexico  
Kaye Stack, California  
One-Year Directors:  
Bill Prucha, Illinois  
Bruce L. Strome, PDG, Ohio  
Dr. Joseph E. Trezza, California  
Editor William A. "Bill" Smith, PCC, Virginia  
Legal Counsel Charles Weldon, California  
Nominations Chairman Dr. O. J. Ratcliff, PDG, Arkansas  
Policy Chairman William A. "Bill" Smith, PCC, Virginia

## 1993-1994

President W. R. "Bill" Cooper, Florida  
Immediate Past President Al Stack, California  
First Vice President Robert E. "Bob" Walker, PDG, South Carolina  
Second Vice President Robert C. "Bob" Meyer, Tennessee  
Third Vice President David E. "Dave" Harris, Virginia  
Secretary William "Bill" Sour, Colorado  
Treasurer E. L. "Ed" Fogelman, PDG, Washington  
Two-Year Directors:  
Dennis Lovick, Iowa  
Jeri Pieper, Arizona  
Paul Viano, Massachusetts  
One-Year Directors:  
H. J. Orme, Utah  
William Phifer, New Mexico  
Kaye Stack, California  
Editor William A. "Bill" Smith, PCC, Virginia  
Legal Counsel Charles "Chuck" Weldon, California  
Policy Chairman William A. "Bill" Smith, Virginia

## 1994-1995

President W. R. "Bill" Cooper, Florida  
Immediate Past President Al Stack, California  
First Vice President Robert E. "Bob" Walker, South Carolina  
Second Vice President Robert C. "Bob" Meyer, Tennessee  
Third Vice President David E. "Dave" Harris, Virginia  
Secretary William "Bill" Sour, Colorado  
Treasurer E. L. "Ed" Fogelman, Washington  
Two-Year Directors:  
Bob Ganss, Mississippi  
Jim Moffitt, Arizona  
Angelo Strazzante, Illinois  
One-Year Directors:  
Dennis Lovick, Iowa  
Jeri Pieper, Arizona  
Paul Viano, Massachusetts  
Editor William A. "Bill" Smith, Virginia  
Legal Counsel Charles "Chuck" Weldon, California  
Policy Chairman William A. "Bill" Smith, PCC, Virginia

## 1995-1996

President Robert E. "Bob" Walker, PDG, South Carolina  
Immediate Past President W. R. "Bill" Cooper, Florida  
First Vice President Robert C. "Bob" Meyer, Tennessee  
Second Vice President David E. "Dave" Harris, Virginia  
Third Vice President William "Bill" Prucha, Illinois  
Secretary E. L. "Ed" Fogelman, PDG, Washington  
Recording Secretary Theresa B. "Terry" Smith, Virginia  
Treasurer William "Bill" Sour, Colorado  
Two-Year Directors:  
Curtis "Curt" Barnhill, Virginia  
Lyle Roan, Ohio  
James R. "Jim" Schiebel, PCC, New York  
One-Year Directors:  
Bob Ganss, PDG, Mississippi  
Jim Moffitt, PDG, Arizona  
Angelo Strazzante, Illinois  
Editor William A. "Bill" Smith, PCC, Virginia  
Legal Counsel Charles "Chuck" Weldon, California  
Policy Chairman William A. "Bill" Smith, PCC, Virginia

## 1996-1997

President Robert E. "Bob" Walker, PDG, South Carolina  
Immediate Past President W. R. "Bill" Cooper, Florida  
First Vice President Robert C. "Bob" Meyer, Tennessee  
Second Vice President David E. "Dave" Harris, Virginia  
Third Vice President William "Bill" Prucha, Illinois  
Secretary E. L. "Ed" Fogelman, PDG, Washington  
Recording Secretary Theresa B. "Terry" Smith, Virginia  
Treasurer William "Bill" Sour, Colorado  
Two-Year Directors:  
James "Jim" DeRouche, Texas  
Tim McCaulley, Pennsylvania  
Charles "Chuck" Weldon, California  
One-Year Directors:  
Curtis "Curt" Barnhill, Virginia  
Lyle Roan, Ohio  
James R. "Jim" Schiebel, PCC, New York  
Editor William A. "Bill" Smith, PCC, Virginia  
Legal Counsel Charles "Chuck" Weldon, California  
Policy Chairman William A. "Bill" Smith, PCC, Virginia

## 1997-1998

President Robert C. "Bob" Meyer, Tennessee  
Immediate Past President Robert E. "Bob" Walker, PDG, South Carolina  
First Vice President David E. "Dave" Harris, Virginia  
Second Vice President William "Bill" Prucha, Illinois  
Third Vice President Charles "Chuck" Weldon, California  
Secretary E. L. "Ed" Fogelman, Washington  
Recording Secretary Theresa B. "Terry" Smith  
Treasurer William "Bill" Sour, Colorado  
Two-Year Directors:  
Peter Kosmopoulos, Wisconsin  
Bart Phillips, PCC, Idaho  
Gary Shepherd, Mississippi  
One-Year Directors:  
James "Jim" DeRouche, Texas  
Tim McCaulley, Pennsylvania  
Ken Strauss, Ontario, Canada \*  
Legal Counsel Charles "Chuck" Weldon, California  
Editor William A. "Bill" Smith, Virginia  
Policy Chairman William A. "Bill" Smith, Virginia

\* Elected to serve the remaining one-year term of Chuck Weldon, who was elected as the Third Vice President.

# LITPC Board of Directors

## 1998-1999

President Robert C. "Bob" Meyer, Tennessee  
Immediate Past President Robert E. "Bob" Walker, PDG, South Carolina  
First Vice President David E. "Dave" Harris, Virginia  
Second Vice President William "Bill" Prucha, Illinois  
Third Vice President Charles "Chuck" Weldon, California  
Secretary E. L. "Ed" Fogelman, PDG, Washington  
Recording Secretary Theresa B. "Terry" Smith, Virginia  
Treasurer William "Bill" Sour, Colorado  
Two-Year Directors:  
Charles "Chuck" Fields, Virginia  
Carolyn Marlin, PDG, Arkansas  
Ken Strauss, Ontario, Canada  
One-Year Directors:  
Peter Kosmopoulos, Wisconsin  
Bart Phillips, PCC, Idaho  
Gary Shepherd, PDG, Mississippi  
Editor William A. "Bill" Smith, PCC, Virginia  
Legal Counsel Charles "Chuck" Weldon, California  
Policy Chairman William A. "Bill" Smith, PCC, Virginia

## 1999-2000

President Dave Harris, Virginia  
Immediate Past President Bob Meyer, Tennessee  
First Vice President Bill Prucha, Illinois  
Second Vice President Chuck Weldon, California  
Third Vice President James Schiebel, PCC, New York  
Secretary Gary Shepherd, PDG, Mississippi  
Recording Secretary Theresa B. "Terry" Smith, Virginia  
Treasurer Bill Sour, Colorado  
Secretary-Treasurer Emeritus Ed Fogelmsn, PDG, Washington  
Two-Year Directors:  
Paul Greenfield, PDG, Australia  
Lyle Fetchtelkoter, PDG, Wisconsin  
Bart Phillips, PCC, Idaho  
One-Year Directors:  
Chuck Fields, Virginia  
Carolyn Marlin, Arkansas  
Ken Straus, Canada  
Editor William A. Smith, PCC, Virginia  
Legal Counsel, Chuck Weldon, California  
Policy Chairman William A. "Bill" Smith, PCC, Virginia

## 2000-2001

President Dave Harris, Virginia  
Immediate Past President Bob Meyer, Tennessee  
First Vice President Bill Prucha, Illinois  
Second Vice President Chuck Weldon, California  
Third Vice President James Schiebel, PCC, New York  
Secretary Gary Shepherd, PDG, Mississippi  
Recording Secretary Theresa B. "Terry" Smith, Virginia  
Treasurer Bill Sour, Colorado  
Secretary-Treasurer Emeritus E. L. "Ed" Fogelmsn, PDG, Washington  
Two-Year Directors:  
Larry Anderson, PDG, Colorado  
Chuck Fields, Virginia  
Bob Libin, New York  
One-Year Directors:  
Paul Greenfield, PDG, Australia  
Lyle Fetchtelkoter, PDG, Wisconsin  
Bart Phillips, PCC, Idaho  
Editor William A. Smith, PCC, Virginia  
Legal Counsel, Chuck Weldon, California  
Policy Chairman William A. "Bill" Smith, PCC, Virginia

## 2001-2002

President William "Bill" Prucha, Illinois  
Immediate Past President David E. "Dave" Harris, Virginia  
First Vice President Charles "Chuck" Weldon, California  
Second Vice President James R. "Jim" Schiebel, PCC, New York  
Third Vice President Larry L. Shaull, PDG, Pennsylvania  
Secretary Gary Shepherd, PDG, Mississippi  
Recording Secretary Theresa B. "Terry" Smith, Virginia  
Treasurer William "Bill" Sour, Colorado  
Secretary-Treasurer Emeritus E. L. "Ed" Fogelman, PDG, Washington  
Two-Year Directors:  
Gary "Yogi" Braet, PDG, Iowa  
Peter "Pete" Kowalick, New Jersey  
Gerald Warren, PDG, West Virginia  
One-Year Directors:  
Larry Anderson, Colorado  
Chuck Fields, Virginia  
Bob Libin, New York  
Editor William A. "Bill" Smith, PCC, Virginia  
Legal Counsel Charles "Chuck" Weldon, California  
Policy Chairman William A. "Bill" Smith, PCC, Virginia

## 2002-2003

President William "Bill" Prucha, Illinois  
Immediate Past President David E. "Dave" Harris, Virginia  
First Vice President Charles "Chuck" Weldon, California  
Second Vice President James R. "Jim" Schiebel, PCC, New York  
Third Vice President Larry L. Shaull, PDG, Pennsylvania  
Secretary Gary Shepherd, PDG, Mississippi  
Recording Secretary Theresa B. "Terry" Smith, Virginia  
Treasurer William "Bill" Sour, Colorado  
Secretary-Treasurer Emeritus E. L. "Ed" Fogelman, PDG, Washington  
Two-Year Directors:  
Philip "Phil" Castrovinci, North Carolina  
Marion Libin, New York  
William "Bill" Nelson, PDG, Colorado  
One-Year Directors:  
Gary "Yogi" Braet, PDG, Iowa  
Peter "Pete" Kowalick, New Jersey  
Gerald Warren, PDG, West Virginia  
Editor William A. "Bill" Smith, PCC, Virginia  
Legal Counsel Charles "Chuck" Weldon, California  
Policy Chairman William A. "Bill" Smith, PCC, Virginia

## 2003-2004

President Charles R. "Chuck" Weldon, California  
Immediate Past President William "Bill" Prucha, Illinois  
First Vice President James R. "Jim" Schiebel, PCC, New York  
Second Vice President Larry L. Shaull, PDG, Pennsylvania  
Third Vice President William "Bill" Sour, Colorado  
Secretary Bill Nelson, PDG, Colorado  
Treasurer Donald "Don" Montlack, PDG, Florida  
Secretary-Treasurer Emeritus E. L. "Ed" Fogelman, PDG, Washington  
Two-Year Directors:  
Robert "Bob" Hoover, PDG, Oregon  
Amos Shatzer, PDG, Indiana  
Theresa B. "Terry" Smith, Virginia  
One-Year Directors:  
Philip "Phil" Castrovinci, North Carolina  
George "Curt" Fitch, PDG, Connecticut  
Marion Libin, New York  
Editor William A. "Bill" Smith, PCC, Virginia  
Legal Counsel Charles "Chuck" Weldon, California  
Policy Chairman William A. "Bill" Smith, PCC, Virginia

# LITPC Board of Directors

## 2004-2005

President Charles R. "Chuck" Weldon, California  
Immediate Past President William "Bill" Prucha, Illinois  
First Vice President James R. "Jim" Schiebel, PCC, New York  
Second Vice President Larry L. Shaull, PDG, Pennsylvania  
Third Vice President William "Bill" Sour, Colorado  
Secretary Bill Nelson, PDG, Colorado  
Treasurer Donald "Don" Montlack, PDG, Florida  
Secretary Treasurer Emeritus E. L. "Ed" Fogelman, PDG, Washington  
Two-Year Directors:  
George "Curt" Fitch, PDG, Connecticut  
Ronald "Ron" Jordan, PDG, Missouri  
James "Jim" Minnich, PDG, Delaware  
One-Year Directors:  
Robert "Bob" Hoover, PDG, Oregon  
Amos Shatzer, PDG, Indiana  
Theresa B. "Terry" Smith, Virginia  
Editor William A. "Bill" Smith, PCC, Virginia  
Legal Counsel Charles "Chuck" Weldon, California  
Policy Chairman William A. "Bill" Smith, PCC, Virginia

## 2005-2006

President James R. "Jim" Schiebel, PCC, New York  
Immediate Past President Charles R. "Chuck" Weldon, California  
First Vice President Larry L. Shaull, PDG, Pennsylvania  
Second Vice President William "Bill" Sour, Colorado  
Third Vice President Robert "Bob" Hoover, PDG, Oregon  
Secretary Lana McCaulley, Pennsylvania  
Treasurer Donald "Don" Montlack, PDG, Florida  
Secretary-Treasurer Emeritus E. L. "Ed" Fogelman, PDG, Washington  
Two-Year Directors:  
Elwyn "Beanie" Beane, PDG, Wisconsin  
Harry Fulwiler, III, Virginia  
Ken Jones, Indiana  
One-Year Directors:  
George "Curt" Fitch, PDG, Connecticut  
Ronald "Ron" Jordan, PDG, Missouri  
James "Jim" Minnich, PDG, Delaware  
Editor William A. "Bill" Smith, PCC, Virginia  
Legal Counsel Charles "Chuck" Weldon, California  
Policy Chairman William A. "Bill" Smith, PCC, Virginia

## 2006-2007

President James R. "Jim" Schiebel, PCC, New York  
Immediate Past President Charles R. "Chuck" Weldon, California  
First Vice President Larry L. Shaull, PDG, Pennsylvania  
Second Vice President William "Bill" Sour, Colorado  
Third Vice President Robert "Bob" Hoover, PDG, Oregon  
Secretary Lana McCaulley, Pennsylvania  
Treasurer Donald "Don" Montlack, PDG, Florida  
Two-Year Directors:  
Reg Langusch, PDG, Australia  
John Leggett, England  
William "Bill" Middleton, PDG, Oklahoma  
One-Year Directors:  
Elwyn "Beanie" Beane, PDG, Wisconsin  
Harry Fulwiler, III, Virginia  
Ken Jones, Indiana  
Editor William A. "Bill" Smith, PCC, Virginia  
Legal Counsel Charles "Chuck" Weldon, California  
Policy Chairman William A. "Bill" Smith, PCC, Virginia

## 2007-2008

President Larry L. Shaull, PDG, Pennsylvania  
Immediate Past President James R. "Jim" Schiebel, PCC, New York  
First Vice President William "Bill" Sour, Colorado  
Second Vice President James "Jim" Minnich, Delaware  
Secretary Lana McCaulley, Pennsylvania  
Treasurer Harry Fulwiler, III, Virginia  
Two-Year Directors:  
Charles "Chuck" Boeding, PDG, Iowa  
John O'Malley, PDG, North Carolina  
Donald "Don" Wagner, PDG, Georgia  
One-Year Directors:  
Reg Langusch, PDG, Australia  
John Leggett, England  
William "Bill" Middleton, PDG, Oklahoma  
Editor William A. "Bill" Smith, PCC, Virginia  
Legal Counsel Robert "Bob" Libin, PDG, New York  
Policy Chairman William A. "Bill" Smith, PCC, Virginia  
Web Master Philip W. "Phil" Schrack, PCC, Virginia

## 2008-2009

President Larry L. Shaull, PDG, Pennsylvania  
Immediate Past President James R. "Jim" Schiebel, New York  
First Vice President William "Bill" Sour, Colorado  
Second Vice President James "Jim" Minnich, PDG, Delaware  
Secretary Lana McCaulley, Pennsylvania  
Treasurer Harry Fulwiler III, Virginia  
Two-Year Directors:  
Nan Blakemore, PDG, Missouri  
Michael "Mike" Gutyan, PDG, Indiana  
Jerry Townsend, PDG Mississippi  
One-Year Directors:  
Charles "Chuck" Boeding, PDG, Iowa  
John O'Malley, PDG, North Carolina  
Donald "Don" Wagner, PDG, Georgia  
Editor William A. "Bill" Smith, PCC, Virginia  
Legal Counsel Robert "Bob" Libin, PDG, New York  
Policy Chairman William A. "Bill" Smith, PCC, Virginia  
Web Master Philip W. "Phil" Schrack, PCC, Virginia

## 2009-2010

President William "Bill" Sour  
Immediate Past President Larry L. Shaull, PDG, Pennsylvania  
First Vice President James "Jim" Minnich, PDG, Delaware  
Second Vice President Paul Viano, PCC, Massachusetts  
Secretary Lana McCaulley, Pennsylvania  
Treasurer Donald Wagner, PDG, Georgia  
Two-Year Directors: President William "Bill" Sour, Colorado  
Immediate Past President  
Lance Balding, PDG, Colorado  
Philip "Phil" Bauman, PDG, Minnesota  
Edward E. "Gene" English, PDG, North Carolina  
One-Year Directors:  
Nan Blakemore, PDG, Missouri  
Michael "Mike" Gutyan, PDG, Indiana  
Jerry Townsend, PDG, Mississippi  
Editor Kenneth "Ken" Jones, Indiana  
Legal Counsel Robert "Bob" Libin, PDG, New York  
Policy Chairman Harry Fulwiler, III, Virginia  
Web Master Philip W. "Phil" Schrack, PCC, Virginia

# LITPC Board of Directors

## 2010-2011

President William "Bill" Sour, Colorado  
Immediate Past President Larry L. Shaul, PDG, Pennsylvania  
First Vice President James "Jim" Minnich, PDG, Delaware  
Second Vice President Paul Viano, PCC, Massachusetts  
Secretary Lana McCaulley, Pennsylvania  
Treasurer Donald Wagner, PDG, Georgia  
Two-Year Directors  
Merle Dutt, Ohio  
Rich Koch, Wisconsin  
John Holland, PDG, Nevada  
One Year Directors  
Lance Balding, PDG, Colorado  
Philip "Phil" Bauman, PDG, Minnesota  
Edward E. "Gene" English, PDG, North Carolina  
Editor Kenneth "Ken" Jones, Indiana  
Legal Counsel Robert "Bob" Libin, PDG, New York  
Policy Chairman Harry Fulwiler, III, Virginia  
Web Master Philip W. "Phil" Schrack, PCC, Virginia

## 2011-2012

President James "Jim" Minnich, PDG, Delaware  
Immediate Past President William "Bill" Sour, Colorado  
First Vice President, Paul Viano, PCC, Massachusetts  
Second Vice President, Robert "Bob" Libin, New York-New Hampshire  
Secretary Lana McCaulley, Pennsylvania  
Treasurer Donald Wagner, PDG, Georgia  
Two-Year Directors  
Don Ager, PCC, New Hampshire  
Kent Clovis, PCC, Oklahoma  
Lance Leak, PDG, Australia  
One-Year Directors  
Merle Dutt, Ohio  
Rich Koch, Wisconsin  
John Holland, PDG, Nevada  
Editor Kenneth "Ken" Jones, Indiana  
Legal Counsel Robert "Bob" Libin, PDG, New York  
Policy Chairman Harry Fulwiler, III, Virginia  
Web Master Philip W. "Phil" Schrack, PCC, Virginia

## 2012-2013

President James "Jim" Minnich, PDG, Delaware  
Immediate Past President William "Bill" Sour, Colorado  
First Vice President, Paul Viano, PCC, Massachusetts  
Second Vice President, Robert "Bob" Libin, New York-New Hampshire  
Secretary Lana McCaulley, Pennsylvania  
Treasurer Donald Wagner, PDG, Georgia  
Two Year Directors  
Richard Durham, PDG, North Carolina  
Andrew "Andy" Hoedl, Kansas  
Steve Staudinger, Washington  
One-Year Directors  
Donald "Don" Ager, PCC, New Hampshire  
Kent Clovis, PCC, Oklahoma  
Lance Leak, PDG, Australia  
Editor "Ken" Jones, Indiana  
Legal Counsel Robert "Bob" Libin, PDG, New York  
Policy Chairman Harry Fulwiler, III, Virginia  
Web Master Philip W. "Phil" Schrack, PCC, Virginia

## 2013-2014

President Paul Viano, PCC, Massachusetts  
Immediate Past President James "Jim" Minnich, PDG, Delaware  
First Vice President Robert "Bob", PDG, New York-New Hampshire  
Second Vice President Michael "Mike" Gutyman, PCC, Indiana  
Secretary Lana McCaulley, Pennsylvania  
Treasurer Richard Durham, PDG, North Carolina  
Two-Year Directors  
Phil Dzurmak, Connecticut  
Vrla Leach, Virginia  
James "Jim" Walls, PDG, Michigan  
One-Year Directors  
Andrew "Andy" Hoedl, Kansas  
Steve Staudinger, Washington  
Joe Trezza, California  
Editor Kenneth "Ken" Jones, Indiana  
Legal Counsel Robert "Bob" Libin, PDG, New York-New Hampshire  
Policy Chairman James "Jim" Schiebel, PCC, New York  
Web Master Philip W. "Phil" Schrack, PCC, Virginia

## 2014-2015

President Paul Viano, PCC, Massachusetts  
Immediate Past President James "Jim" Minnich, PDG, Delaware  
First Vice President Robert "Bob", PDG, New York-New Hampshire  
Second Vice President Michael "Mike" Gutyman, PCC, Indiana  
Secretary Lana McCaulley, Pennsylvania  
Treasurer Richard Durham, PDG, North Carolina  
Two-Year Directors  
Mary Green, Texas  
Steve Sherer PID, Ohio  
Catherine Walton, PDG, Florida  
One-Year Directors  
Phil Dzurmak, Connecticut  
Vrla Leach, Virginia  
James "Jim" Walls, PDG, Michigan  
Editor Kenneth "Ken" Jones, Indiana  
Legal Counsel Robert "Bob" Libin, PDG, New York-New Hampshire  
Policy Chairman James "Jim" Schiebel, PCC, New York  
Web Master Philip W. "Phil" Schrack, PCC, Virginia

## 2015-2016

President Robert "Bob" Libin, ID, New York  
Immediate Past President Paul Viano, PCC, Massachusetts  
First Vice President Michael "Mike" Gutyman, PCC, Indiana  
Kent Clovis, PCC, Oklahoma  
Secretary Lana McCaulley, Pennsylvania  
Treasurer Richard Durham, PDG, North Carolina  
Two-Year Directors  
Jay Puls, California  
Lambert Ratard, PCC, Louisiana  
Peggy Walls, Michigan  
One-Year Directors  
Mary Green, Texas  
Steve Sherer, PID, Ohio  
Catherine Walton, PDG, Florida  
Editor Kenneth "Ken" Jones, Indiana  
Legal Counsel Jeffery "Jeff" Gans, PCC, New Jersey  
Policy Chairman James "Jim" Schiebel, PCC, New York  
Web Master Philip W. "Phil" Schrack, PCC, Virginia



# LITPC Board of Directors

## 2016-2017

President Robert "Bob" Libin, ID, New York  
Immediate Past President Paul Viano, PCC, Massachusetts  
First Vice President Michael "Mike" Gutyman, PCC, Indiana  
Second Vice President Kent Clovis, PCC, Oklahoma  
Secretary Lana McCaulley, Pennsylvania  
Treasurer Richard Durham, PDG, North Carolina  
Two-Year Directors  
Arlen Eidson, PDG, Virginia  
William "Bill" Guthrie, Minnesota  
Stephen Staudinger, Washington  
One-Year Directors  
Jay Puls, California  
Lambert Ratard, PCC, Louisiana  
Peggy Walls, Michigan  
Editor Kenneth "Ken" Jones, Indiana  
Legal Counsel Jeffery "Jeff" Gans, PCC, New Jersey  
Policy Chairman James "Jim" Schiebel, PCC, New York  
Web Master Philip W. "Phil" Schrack, PCC, Virginia

## 2017-2018

President Michael "Mike" Gutyman, PCC, Indiana  
Immediate Past President Robert "Bob" Libin, PID, New York  
First Vice President Kent Clovis, PCC, Oklahoma  
Second Vice President Steven "Steve" Sherer, PID, Ohio  
Secretary Lana McCaulley, Pennsylvania  
Treasurer Richard Durham, PDG, North Carolina  
Two-Year Directors  
Jerry Craiglow, North Carolina  
George Lonneman, PCC, Kentucky  
Jeff Hilke, PDG, Missouri  
One-Year Directors  
Arlen Eidson, PDG, Virginia  
William "Bill" Guthrie, Minnesota  
Stephen Staudinger, Washington  
Editor Richard "Rich" Evans, PDG, Virginia  
Legal Counsel Robert "Bob" Libin, PID, New York  
Policy Chairman James "Jim" Schiebel, PCC, New York  
Web Master Philip W. "Phil" Schrack, PCC, Virginia

## 2018-2019

President Michael "Mike" Gutyman, PCC, Indiana  
Immediate Past President Robert "Bob" Libin, PID, New York  
First Vice President Kent Clovis, PCC, Oklahoma  
Second Vice President Steven "Steve" Sherer, PID, Ohio  
Secretary Lana McCaulley, Pennsylvania  
Treasurer Richard Durham, PDG, North Carolina  
Two-Year Directors  
Meg Ager, New Hampshire  
Walter Keach, Connecticut  
Chester Kramer, PCC, Virginia  
One-Year Directors  
Jerry Craiglow, North Carolina  
George Lonneman, PCC, Kentucky  
Jeff Hilke, PDG, Missouri  
Editor Richard "Rich" Evans, PDG, Virginia  
Legal Counsel Robert "Bob" Libin, PID, New York  
Policy Chairman James "Jim" Schiebel, PCC, New York  
Web Master Philip W. "Phil" Schrack, PCC, Virginia

## 2008 LITPC Board of Directors Pin Set

For the first time in our brief history, the members of the LITPC Board of Directors and the active Past Presidents issued a set of pins (designed by President, PDG **Larry Shaull**) for release during the 2008 Alternate Site Meeting in Jefferson City, Missouri. The set was so well-received, a new set has been issued every year since. Of special note is the pin in this set for Past President **Bill Cooper**, Florida, who had passed away before the set could be issued.



We have chosen to show only the pin for the president since all pins are identical, except for the name, the names of the individuals on the Board who participated. Immediate Past President **Jim Schiebel**, 1st Vice President **Bill Sour**, 2nd Vice President **Jim Minnich**, Secretary **Lana McCaulley**, Treasurer **Harry Fulwiler**, Directors **Reg Langusch**, **John Leggett**, **Bill Middleton**, **Chuck Boeding**, **John O'Malley**, and **Don Wagner**, Legal Counsel **Bob Libin**, Web Master **Phil Schrack**, Past Presidents **Bill Prucha**, **Dave Harris**, **Bob Walker**, **Bill Cooper**, **Al Stack**, **Bill Smith**, and **George Walker**.

## 2009 LITPC Board of Directors Pin Set



Jim Schiebel



Bill Sour



Jim Minnich



Lana McCaulley



Harry Fulwiler



President  
Larry Shaull



Bob Libin



Phil Schrack



Nan Blakemore



Chuck Boeding



Mike Gutyán



John O'Malley



Jerry Townsend



Don Wagner



Bill Prucha



Dave Harris



Bob Walker



Al Stack



Bill Smith



George Weaver

NOTE: Since all pins are identical except for the color used in each pin, we are only showing the full pin for the President.

## 2010 Board of Directors Pin Set



## 2011 Board of Directors Pin Set

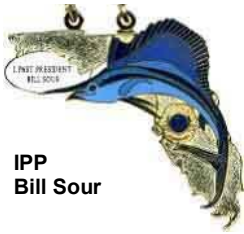


NOTE: Since all pins feature the same Space Needle, we are showing only the dangler for all, except the one for the President.

## 2012 Board of Directors Pin Set



**President  
Jim Minnich**



**IPP  
Bill Sour**



**1st VP  
Paul Viano**



**2nd VP  
Bob Libin**



**Secretary  
Lana McCaulley**



**Treasurer  
Don Wagner**



**Director  
Merle Dutt**



**Director  
John Holland**



**Director  
Don Ager**



**Director  
Rich Koch**



**Director  
Kent Clovis**



**Director  
Lance Leak**



**Legal  
Bob Libin**



**Policy  
Harry Fulwiler**



**Editor  
Ken Jones**



**Webmaster  
Phil Schrack**



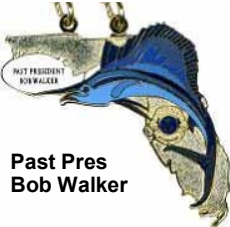
**Past Pres  
Larry Shaul**



**Past Pres  
Jim Schiebel**



**Past Pres  
Bill Prucha**



**Past Pres  
Bob Walker**



**Past Pres  
Al Stack**



**Past Pres  
Bill Smith**



**Past Pres  
George Weaver**

**NOTE: Except for President Jim Minnich's pin, which is shown in full size, the pins in this set have been reduced in order to display all of the pins on one page.**

## 2013 Board of Directors Pin Set



**Jim Minnich**  
President



**Bill Sour**  
Immediate Past President



**Paul Viano**  
1st Vice President



**Bob Libin**  
2nd Vice President



**Lana McCaulley**  
Secretary



**Don Wagner**  
Treasurer



**Ken Jones**  
Editor



**Bob Libin**  
Legal Counsel



**Harry Fulwiler**  
Policy Chairman



**Phil Schrack**  
Web Master



**Don Ager**  
Director



**Kent Clovis**  
Director



**Lance Leak**  
Director



**Richard Durham**  
Director



**Andy Hoedl**  
Director



**Steve Staudinger**  
Director



**Larry Shaull**  
Past President



**Jim Schiebel**  
Past President



**Bill Prucha**  
Past President



**Bob Walker**  
Past President



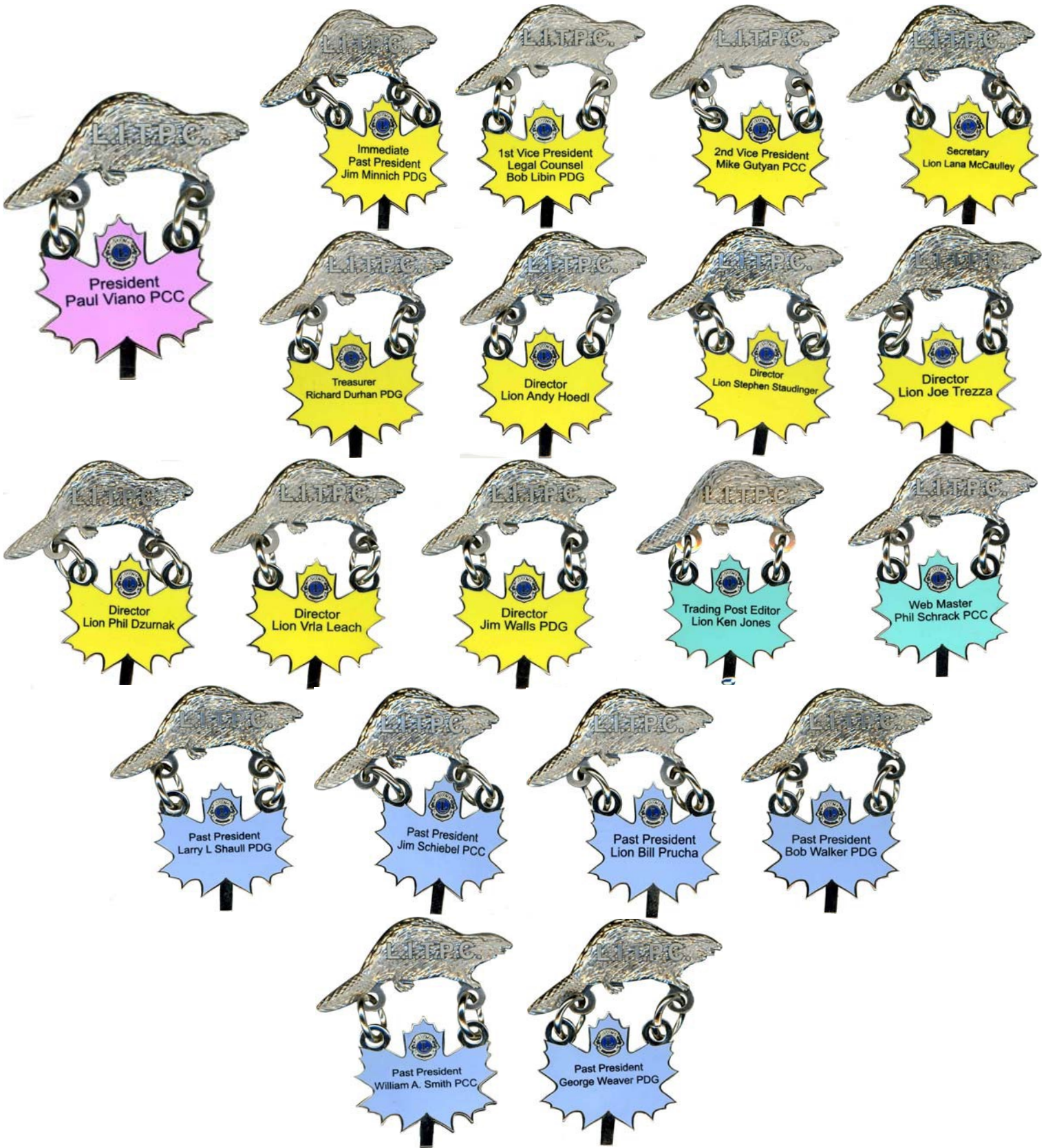
**Bill Smith**  
Past President



**George Weaver**  
Past President

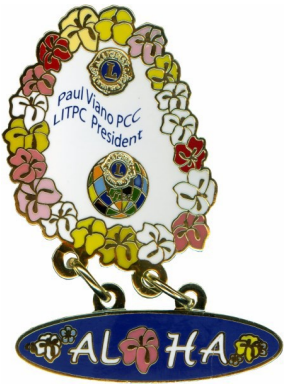
**NOTE:** Except for the first image showing the lid in the closed position, all pins in this set have been reduced in size with the lids open in order to display all of the pins on one page.

# 2014 Board of Directors Pin Set



**NOTE:** Except for the first image, all pins in this set have been reduced in size with the in order to display all of the pins on one page.

## 2015 Board of Directors Pin Set



**Paul Viano**  
President



**Jim Minnich**  
Immediate Past President



**Bob Libin**  
1st Vice President



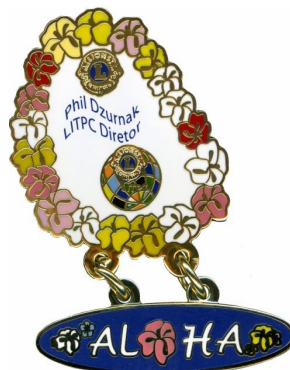
**Mike Gutyan**  
2nd Vice President



**Lana McCaulley**  
Secretary



**Richard Durham**  
Treasurer



**Phil Dzurnak**  
Director



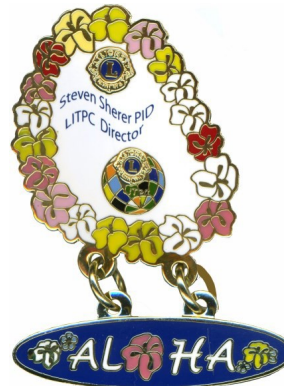
**Vrla Leach**  
Director



**Jim Walls**  
Director



**Mary Green**  
Director



**Steve Sherer**  
Director



**Catherine Walton**  
Director



**Ken Jones**  
Editor



**Phil Schrack**  
Web Master



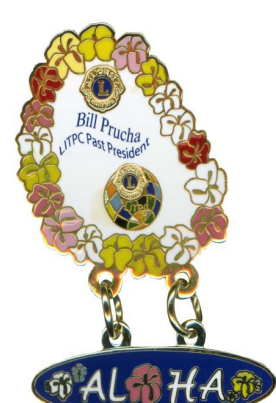
**Bill Sour**  
Past President



**Larry Shaull**  
Past President



**Jim Schiebel**  
Past President

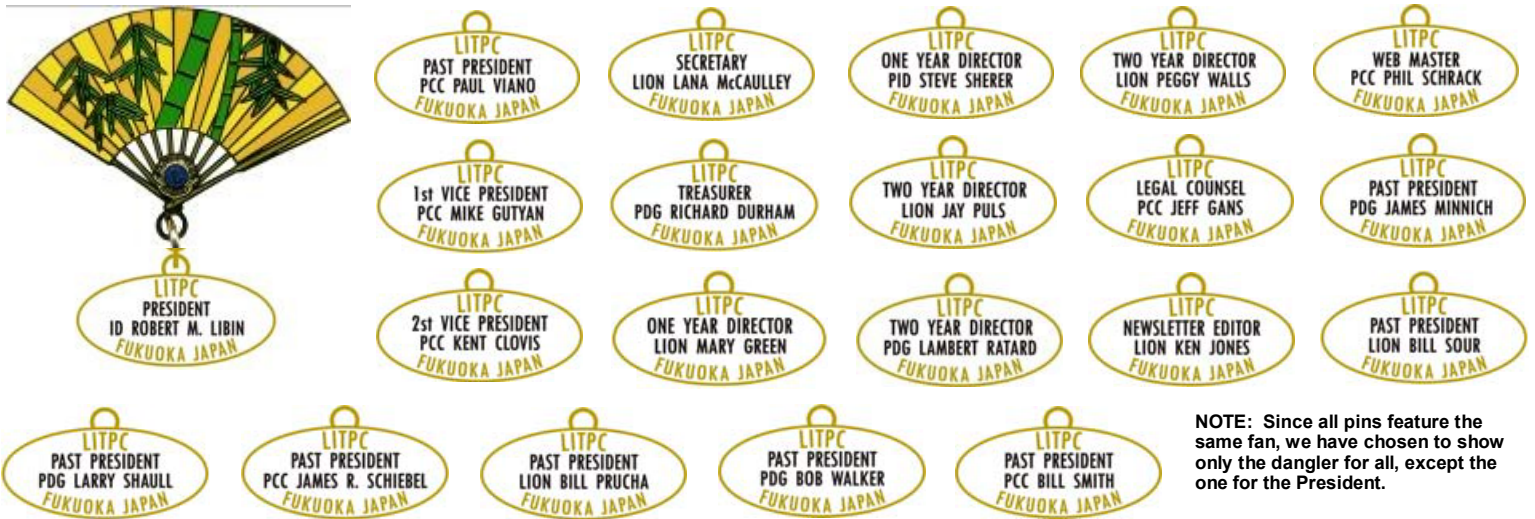


**Bill Prucha**  
Past President



**Bob Walker**  
Past President

## 2016 Board of Directors Pin Set



NOTE: Since all pins feature the same fan, we have chosen to show only the dangler for all, except the one for the President.

## 2017 Board of Directors Pin Set



NOTE: All images have been reduced in size in order to show the entire set on one page.



## 2018 Board of Directors Pin Set



**Mike Gutyan (IN)**  
President



**Kent Clovis (OK)**  
First Vice President



**Steve Sherer (OH)**  
Second Vice President



**Lana McCaulley (PA)**  
Secretary



**Richard Durham (NC)**  
Treasurer



**Arlen Eidson (VA)**  
Director



**Bill Guthrie (MN)**  
Director



**Steve Staudinger (WA)**  
Director



**Jerry Craiglow (NC)**  
Director



**Jeff Hilde (MO)**  
Director



**George Lonneman (KY)**  
Director



**Richard Evans (VA)**  
Editor



**Phil Schrack (VA)**  
Webmaster



**Bob Libin (NY)**  
Past President



**Paul Viano (MA)**  
Past President



**Jim Minnich (DE)**  
Past President



**Larry Shaul (PA)**  
Past President



**Bill Sour (CO)**  
Past President



**Jim Schiebel (NY)**  
Past President



**Bill Prucha (IL)**  
Past President



**Bob Walker (SC)**  
Past President



**Bill Smith (VA)**  
Past President

NOTE: All images have been reduced in size in order to show the entire set on one page.